



Greater Bay Area Study Tour 大灣區考察團

28 – 29 June 2019 (Friday & Saturday)

ISCM will organize a study tour to Greater Bay Area (Guangzhou, Zhuhai, Hengqin) from 28 to 29 June 2019, where participants will be given the opportunity to visit Taikoo Hui, Parc Central, Grandview Mall in Guangzhou, Huafa Commercial Plaza in Zhuhai, and the showsuite of Hengqin Free Trade Zone. Furthermore, participants can enjoy an enlivening bonding experience with peers. We trust this tour will bring you a unique travel experience that combines learning with travelling.

TOUR INFORMATION

Date: 28 – 29 June 2019 (Friday & Saturday)

Train: Hong Kong West Kowloon → Guangzhou South

PACKAGE INCLUDES

- Travel from Hong Kong West Kowloon to Guangzhou South with High-speed trains
- Travel from Zhuhai to Hong Kong via Hong Kong-Zhuhai-Macau Bridge with private coach
- 1 night accommodation at Clifford Suites
- Single room supplement of HK\$370
- Breakfast at hotel
- Lunch on both days and dinner on first day
- Transportation with private coach
- Cantonese speaking tour guide
- Tips for tour guide
- Travel insurance

REGISTRATION FEE

Member
HK\$1,980

Non-Member
HK\$2,350

APPLICATION DEADLINE
24 June 2019 (Monday)

Register now at:
<http://bit.do/eVd5W>



Greater Bay Area Study Tour 大灣區考察團

28 – 29 June 2019 (Friday – Saturday)

ITINERARY

DAY 1

Gather at West Kowloon High-speed train station
Arrive Guangzhou

 **Lunch**

Beijing Road Pedestrian Street
Taikoo Hui
Parc Central
Grandview Mall

 **Dinner**

DAY 2

 **Breakfast at hotel** (private coach pick up at hotel)

Guangzhou to Hengqin
Hengqin Free Trade Zone

 **Lunch**

Huafa Commercial Plaza
Zhuhai to Hong Kong via Hong Kong-Zhuhai-Macau Bridge

Remarks:

- Participants' travel document must be valid for at least 6 months including entry and transit visa for your journey
- Participants' registered name must be identical with the travel document.
- The itinerary is subject to change without prior notice.
- Participation priority will be given to ISCM members.

Greater Bay Area Study Tour 大灣區考察團

28 – 29 June 2019 (Friday – Saturday)

Taikoo Hui

With a total floor area of approximate 138,000 sqm, Taikoo Hui Guangzhou is home to over 180 brands, including internationally acclaimed brands, sophisticated lifestyle boutiques and exquisite cuisines and restaurants. Several acclaimed brands set up their flagship stores at Taikoo Hui Guangzhou. Taikoo Hui Guangzhou is dedicated to present differentiated shopping experience to its customers in Guangzhou & other cities in the Guangdong Province.



Grandview Mall

Grandview Mall with a total shopping area of approximately 300,000 sqm is located in Tianhe District, covering retail, leisure, entertainment, catering, exhibition and other business sectors which attracts 2 million tourists every year. The Grandview Mall Aquarium on the 6/F is considered to be one of the longest malls' aquariums in China.

Parc Central

Parc Central is located in the heart of Guangzhou's CBD which is easily accessible by car and public transport. It is the first luxury mall developed by Sun Hung Kai Properties in South China. Parc Central is a landmark with 110,000 sqm covering flagship stores, boutiques, restaurants and the first LUXE cinema in South China. Awards received by Parc Central including LEED Gold Certificate, Best Chinese Mega Project in MIPIM Asia, ICSC China Shopping Center Gold Medal and others.

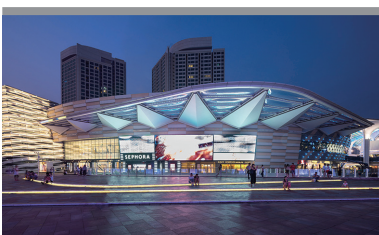


Beijing Road Pedestrian Street

Lively, crowded and fast-paced, Beijing Road Pedestrian Street is a busy commercial street in central Guangzhou. It has been the city's main shopping street throughout much of its history. In this car-free area there are dozens of shops to explore, including boutiques, jewelers, bookstores, supermarkets and stores that sell locally produced goods. Beijing Road isn't just a destination for shopping, on and around this famous street you will find some excavated and preserved sites at a few of the street's underground archaeological sites.

Hengqin Free Trade Zone

Situated in the south of Zhuhai in Guangdong Province, the Hengqin FTZ (Free Trade Zone) is only 34 nautical miles from Hong Kong with proximity to Macao being merely 187 m. Covering 28 sq km, the FTZ plans a land reclamation project to double in land mass by 2020.



Huafa Commercial Plaza

Located in the intersection of Nanpin, Zhuhai Avenue, Huafa Mall covers an overall floorage of 100000 sqm. It will be built to become the biggest commercial center in Zhuhai, which features in one-stop shopping, relaxation, catering and recreation. With the aim to building the world's first-class shopping paradise, it has blended numerous international top design concepts and introduced the world's advanced commercial operating pattern.